



VDRTECH INTERNATIONAL PVT LTD

AN ISO 9001: 2015 CERTIFIED COMPANY

PLASMA SURFACE TREATMENT MACHINE



Our Goal is to keep customers beyond satisfied.

FOR EXCELLENT

- PACKAGING
- BONDING
- PRINTING
- COATING

PASSIONATE ABOUT PLASMA TREATMENT MACHINE

PLASMA TREATMENT PROCESS:

Before Plasma Treatment:

Highly contaminated surface difficult for adhesion.

During Plasma Treatment:

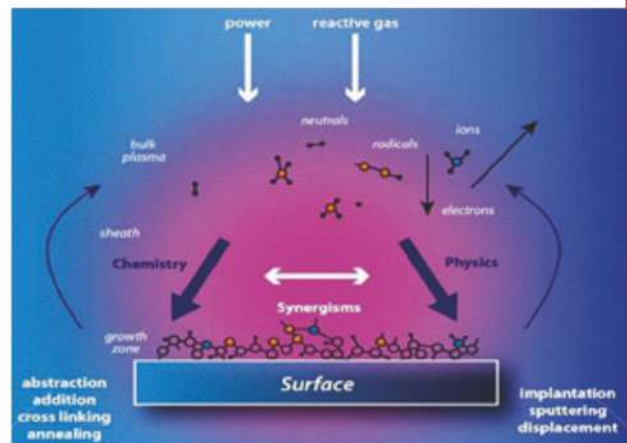
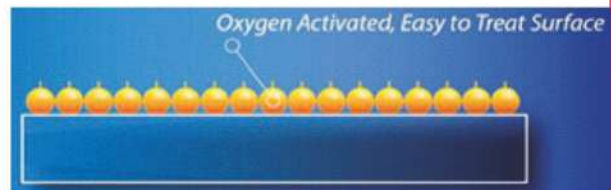
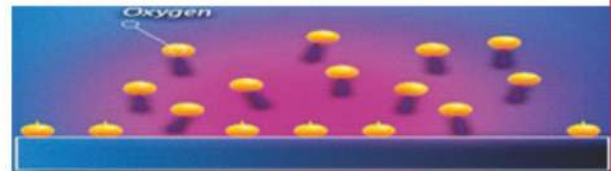
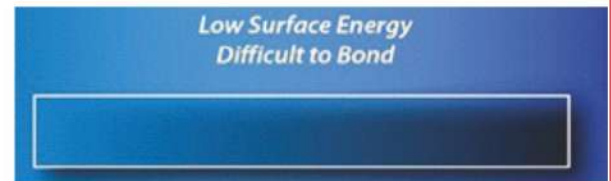
The plasma breaks up separating agents, silicones and oils from the surface.

After Plasma Treatment:

Active oxygen species (radicals) from the plasma bind to active surface sites all over the material, creating a surface that is highly 'active' to bonding agents.

Advantages of Plasma Treatment:

Atmospheric plasma treatment is ideal for in-line processing or for the plasma treatment of small areas of larger parts that would otherwise be too large for vacuum/batch processing. Atmospheric plasma is very effective at activating and cleaning the surface of a material, increasing the adhesion characteristics and making it easier to bond, paint and glue. The atmospheric plasma nozzle can be clamped to a fixed point or to a simple multi-axis robot making it ideal for industrial applications.



BENEFITS AFTER PLASMA SURFACE TREATMENT:

- Strong Bonding.
- Excellent Printing quality.
- Uniform wettability of surface.
- Excellent Printing quality.
- Consistent Dyne level (up to 54 Dyne)
- Eco-friendly flame (Zero hazardous)
- Surface cleaning and better adhesion.
- Better than flame treatment (Only atmospheric air is required)
- Better solution for Grinder replacement (Eliminate dust particles).

PLASMA APPLICATIONS:

PACKAGING: Plasma treatment on modern folding cartons to meet the most demanding design and excellent bonding. The trend in the packaging industries is towards continuously rising design and quality requirements.

The mono cartons such as BOPP, Lamination, met-pet, varnished, poly coated, Glueable UV, thermal etc like high gloss printing soft touch coatings. These materials must be joined to each other cost effectively at high speed and most reliably.



Advantages:

- Makes high processing speeds possible
- No open flames mean greater process safety.
- Robust, durable technology, better carton bonding.
- Simple process monitoring
- Cost effective



Bonding without Plasma Treatment



Bonding with Plasma Treatment

PRINTING:

Plasma treatment process for better ink bonding and highest ink quality in all the usual printing processes. Plasma technology is used as part of all the common printing process like Pad printing, screen printing, offset printing, Ink-jet printing etc. Plasma pretreatment makes good quality print adhesion of solvent free inks possible as well as secure long term adhesion when printing difficulties surfaces like Polypropylene (PP), Polyethylene (PE) i) HDPE ii) LDPE, Polycarbonate (PC), Glass and metals.



Pipe Printing



Pen Printing



Plastic Printing



EPDM Rubber Printing



Cap printing



Card printing



On cable



Pen cap



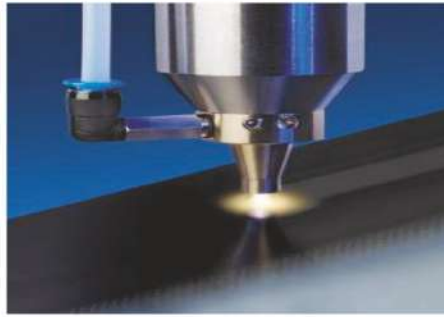
On Syringe

BONDING:

The plasma treatment process helps in adhesion improvement for secure durable bonding of plastics, silicon rubber and metals. Without plasma treatment many materials like polypropylene (PP), polyether ether ketone (PEEK) can not be bonded at all or else bonded very poorly. High bonding strength and durable bonding of glass, metal, ceramics and plastics. Plasma treatment improve the adhesion via surface modification simultaneously ultrafine cleaning and bonding strength on the surfaces to be joined.



Automobile parts



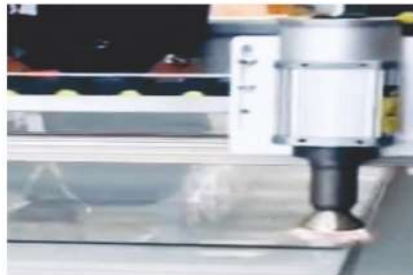
Door Sealing



Speaker Bonding



Epoxy coating on Silicone keypads



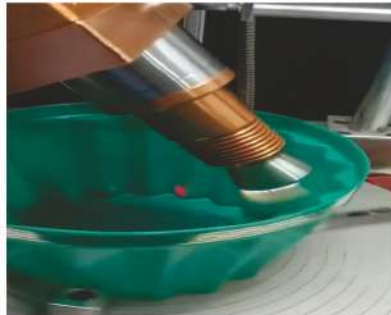
Glass to Gasket bonding



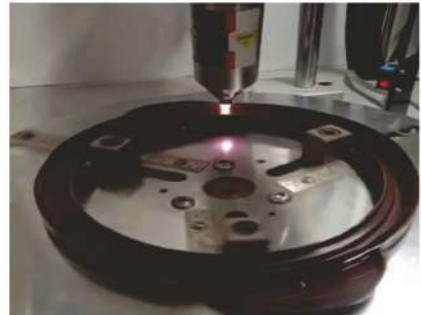
Coating on mobile screen



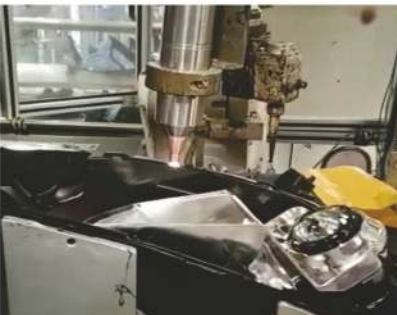
On Hypodermic Needle Hub



On Casserole-1



On Casserole



On Headlight



Coating on brass



Before epoxy potting on automobiles part

PRODUCTS:



**VDR-P03
(1500W)**



**VDR-P04
(1500W)**



**VDR-P03/02
(3000W)**

✓ Specifications

PARAMETER'S	VDR-P03(1500 W)	VDR-P04(1500 W)	VDR-P03/02 (3000 W)
Nozzle Type	Single Static Nozzle	Rotational Nozzle	Dual Static Nozzle
Treatment Width	8-16 mm	25mm,50mm,75mm(Optional)	8-16 mm of both Nozzle
Air Supply	1-1.4 bar (0.14 Mpa)	1-1.4 bar (0.14 Mpa)	1.8-2.5 bar (0.2 Mpa)
Input Supply	220-230 V	220-230 V	220-230 V
Input Frequency	50-60 Hz	50-60 Hz	50-60 Hz
Maximum Output Power	1500 Watt	1500 Watt	3000 Watt
Power Setting Range	400W- 1500 W	400W- 1500W	400W- 1500W of each Nozzle
Output Voltage	7500 V	7500 V	7500 V of each Nozzle
Output Frequency	22-35 Khz	22-35 Khz	22-35 Khz of each Nozzle
Machine Dimensions	560 x 230 x 395 mm	560 x 230 x 395 mm	490 x 470 x 350 mm
Machine Weight	25 Kgs	28 Kgs	35 Kgs

OUR VALUABLE CLIENTS



VDRTECH INTERNATIONAL PRIVATE LIMITED

REGD. OFFICE : A-312/ D-910 Signature 2 Tower, Sanand Sarkhej Highway Road, Sarkhej, AHMEDABAD, GUJARAT-382 210, INDIA.

GURGAON OFFICE : UNIT 12 A FIRST FLOOR, SHOPPING PLAZA, F BLOCK, MARKET SOUTH CITY II, SECTOR-49, GURUGRAM, HARYANA-122018, INDIA.

CONTACT : +91 7428672749, + 91 9599625734 • FOR SERVICE SUPPORT : +91 93111 23100

EMAIL : INFO@VDRINDIA.CO.IN, VDRTECHNOLOGY@GMAIL.COM, WEBSITE : WWW.VDRINDIA.CO.IN

